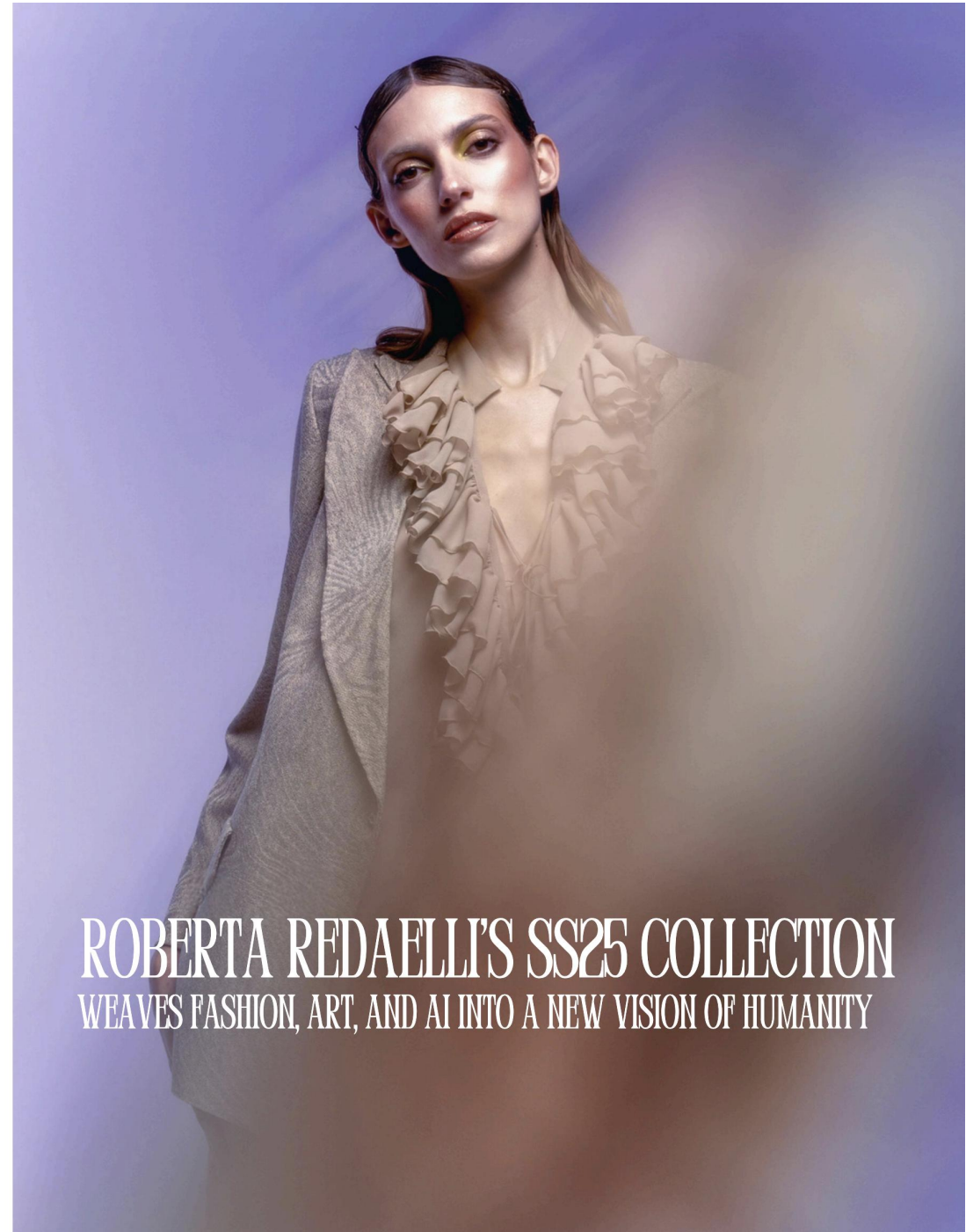




LÄLEROBE

LUXURY LOUNGEWEAR | LÄLEROBE.COM



ROBERTA REDAELLI'S SS25 COLLECTION
WEAVES FASHION, ART, AND AI INTO A NEW VISION OF HUMANITY



In her Spring–Summer 2025 collection, Italian designer Roberta Redaelli elevates the synergy between fashion and contemporary art into a poetic, philosophical dialogue. At the heart of this season’s creative journey lies “Mesh Room”, a visionary art project by Italian photographer Demesis Tescaro, in which photography meets artificial intelligence to reimagine the human form through a surreal and anthropological lens. The result is a fashion collection that is more than an ensemble of garments—it’s an immersive exploration of identity, evolution, and the intangible dimensions of being.

Tescaro’s work, which began with a series called Bodies, now transcends skin and flesh to unveil a multidimensional human—an entity shaped by memory, experience, and technology. “Mesh Room” abandons conventional perspectives in favor of a layered reality, where body, mind, and imagination coexist in fluid harmony. Through AI-enhanced visual experimentation, the project delves into the metamorphic essence of existence, tracing a poetic arc between ancient myth and futuristic inquiry.





This layered vision flows directly into Redaelli's designs. The prints and textiles are a sensory symphony of spirals and volutes—graphic motifs extracted from Tescaro's AI-augmented artworks. Each pattern evokes a dreamlike portal, inviting the viewer into a world where nature and the digital intermingle, creating a liminal space between dream and reality.

The color palette amplifies this tension between ethereality and depth. Shades like Drop, Nectar, Honey, Bitter, Anise, and Mead recall the mythical Ambrosia—the nectar of the gods—suggesting garments imbued with a sacred, transformative power. These hues whisper rather than shout, yet they possess a bold, unmistakable presence.

Stylistically, the collection is a triumph of contrasts: luxurious jacquards dance alongside airy ruffles and volants in stretch silk, while structured silhouettes are softened by fluid lines and tactile details. The brand's iconic knitwear fabric, DINAMI-TECS, returns in a fresh series of tailored jackets, marrying cutting-edge textile innovation with timeless elegance.

As always, Redaelli's mastery lies in her ability to balance conceptual ambition with wearability. While the collection echoes the metaphysical and the abstract, it remains rooted in a confident, contemporary femininity.

Each piece is designed not just to be worn, but to be experienced—an invitation to inhabit a dream where art, science, and soul converge.

SS25 by Roberta Redaelli is not just a collection—it's a statement of being, a wearable reflection on our shifting identities in a world where the boundaries between reality and simulation grow increasingly porous. It is an ode to the human spirit, captured in soft textiles and bold visions, and destined to leave a mark not only on the skin, but in the imagination.



Fashion brand: Roberta Redaelli

Artist: Demesis Tescaro

Photo and post-produzione: Andrea Lamberti

Make-up & Hair: Silvia Argenton